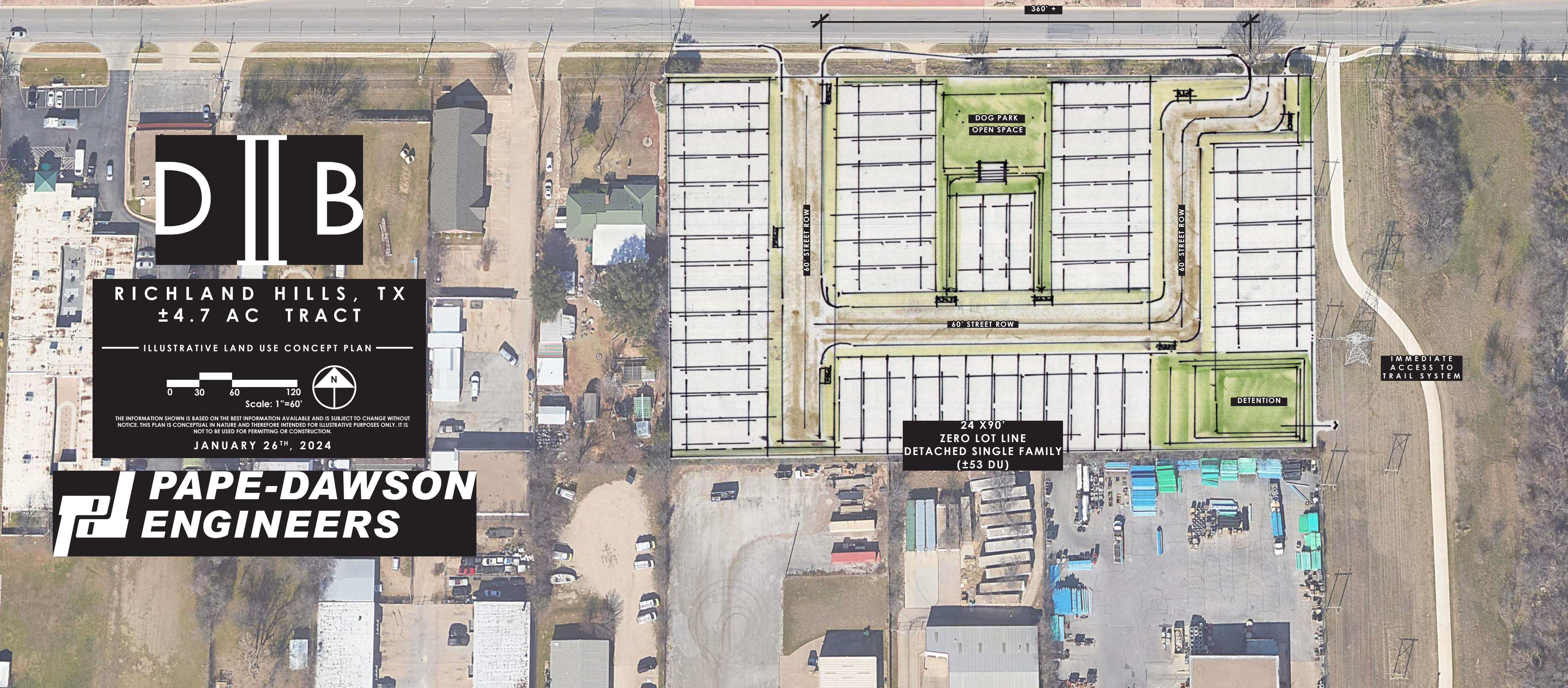




(1) MILE OF TRAIL NORTH TO CITY POINT DEVELOPMENT

BAKER BLVD 160' ROW

POPPLEWELL ST 60' ROW



DIB

RICHLAND HILLS, TX
±4.7 AC TRACT

ILLUSTRATIVE LAND USE CONCEPT PLAN



JANUARY 26TH, 2024

PAPE-DAWSON ENGINEERS

24 X 90'
ZERO LOT LINE
DETACHED SINGLE FAMILY
(±53 DU)

DOG PARK
OPEN SPACE

DETENTION

IMMEDIATE
ACCESS TO
TRAIL SYSTEM

60' STREET ROW

60' STREET ROW

60' STREET ROW

360' +